

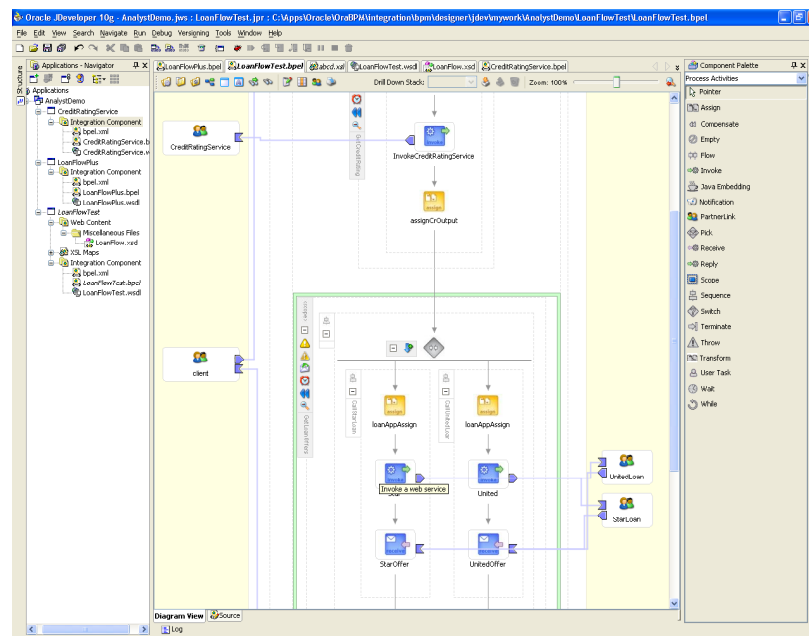
Oracle BPEL Process Manager

ORACLE BPEL PROCESS MANAGER

FEATURES INCLUDE:

- **BPEL Designer**
 - Native BPEL support
 - Drag-and-drop process modeler
 - UDDI and WSIL Service Browser
 - Transformation modeler with auto-mapping features
 - Integrated adapter and human workflow wizards
 - One click build and deploy
 - Sensors to track activities
- **BPEL Console**
 - Visual Monitoring
 - Auditing
 - BPEL debugger
 - In-flight administration
 - Performance tuning
 - Partition/domains
- **Built-in Integration Services**
 - Email and JMS messaging services
 - JCA 1.5 connectivity
 - Adapters for packaged applications and legacy systems
 - Database adapter
 - XSLT and XQUERY Transformation Services
 - Human workflow services
 - Extensible WSIF binding framework
 - Java embedding
- **Human Workflow Service**
 - Task assignment and routing
 - Multiple workflow patterns
 - Identity services
 - Task list
 - Notification services
- **BPEL Server**
 - Comprehensive BPEL 1.1
 - Sync. and async. messaging
 - Context dehydration
 - Advance exception management
 - Side-by-side versioning
 - Large XML document support
 - High performance

An increasing number of companies are looking at Web Services and Service-Oriented Architecture (SOA) as a blueprint and set of standards for addressing the integration requirements involved in building composite applications. BPEL and Web services standards have solved this problem by addressing common application requirements in an open, portable and standard way. SOA enables business agility by maximizing existing resources while minimizing the cost of deploying new applications.



Product Overview

Oracle BPEL Process Manager is an integral part of Oracle's Business Integration solution, which provides a comprehensive, standards-based and easy to use solution for creating, deploying and managing cross-application business processes with both automated and human workflow steps – all in a service-oriented architecture. Its native support for standards such as BPEL, XML, XSLT, XPATH, JMS, JCA and Web Services makes this an ideal solution for creating integrated business processes that are truly portable across platforms. Oracle BPEL Process Manager fully leverages sophisticated features of the underlying Oracle Application Server 10g platform such as security, scalability and high availability.

Oracle BPEL Process Designer

KEY BENEFITS:

- Maximizes the power of an open standard
- Provides a unified design environment for modeling the complete integrated business process
- Provides unparalleled visibility and administration
- Enables dramatic cost savings
- Provides an open and flexible binding framework that Leverages existing java skills and application server investments.

RELATED PRODUCTS AND SERVICES:

- Oracle Application Server Integration B2B
- Oracle Application Server Integration BAM
- Oracle Application Server Integration InterConnect
- Oracle Application Server Integration Adapters
- Oracle JDeveloper

Oracle BPEL Process Designer provides a graphical and user-friendly way to build BPEL processes. Oracle BPEL Designer is unique in that it uses BPEL as its native format. This means that processes built with the Designer are 100-percent portable. It also enables developers to view and modify the BPEL source without decreasing the usefulness of the tool. BPEL Process Designer comes as a plug-in to the JDeveloper environment, providing a unified design time environment to the users. User friendly wizards to set up simple and complex human workflow steps, configure adapters, and define complex transformation maps are provided as standard services in the design time GUI.

Oracle BPEL Process Manager Console

Oracle BPEL Process Manager Console provides a user-friendly Web-based interface for management, administration, and debugging of processes deployed to the BPEL server. Audit trails and process history/reporting information are automatically maintained and available through the BPEL Process Manager Console and via a Java API. The workflow task lists and historical process analysis reports are also integrated into the same console.

Built-In Integration Services

Built-in integration services enable developers to easily leverage advanced workflow, connectivity, and transformation capabilities from standard BPEL processes. These capabilities include support for XSLT and XQuery transformation as well as bindings to hundreds of legacy systems through JCA adapters and native protocols. Human workflow services such as task management, notification management, and identity management are provided as built-in BPEL services to enable the integration of people and manual tasks into BPEL flows. The extensible WSDL binding framework enables connectivity to protocols and message formats other than SOAP. Bindings are available for JMS, email, JCA, HTTP GET, POST, and many other protocols enabling simple connectivity to hundreds of back-end systems.

Oracle BPEL Process Manager Server

The core BPEL engine provides the most mature, scalable, and robust implementation of a BPEL server available today. The Oracle BPEL Process Manager executes standard BPEL processes and provides a “dehydration” capability so that the state of long-running flows is automatically maintained in a database, enabling clustering for both fail-over and scalability. The BPEL Server leverages OC4J as an underlying J2EE application server, with support for most major commercial application servers such as WebLogic.

For More information

To learn more about Oracle BPEL Process Manager visit:

<http://www.oracle.com/technology/products/ias/bpel/index.html>